

# PADLOCKABLE CAM LOCK "ROTO" W/BACK PLATE

## Application:

For metal and wooden cabinets & lockers.  
To be used with a padlock. Screw-on  
installation.

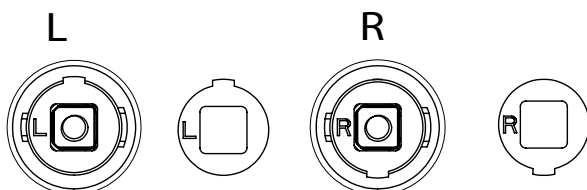
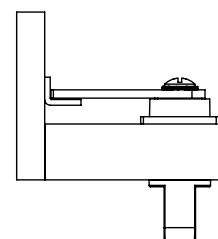
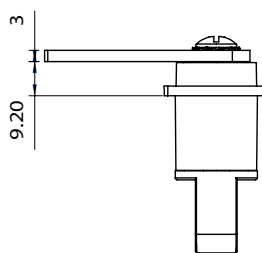
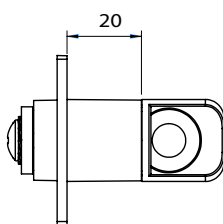
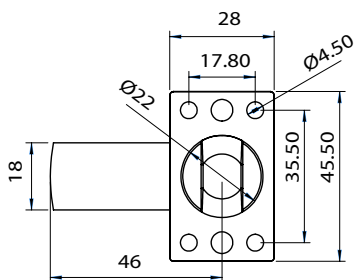
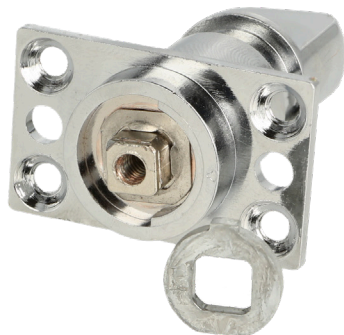
## Accessories for one set:

- 1 zamak lock cylinder Ø22 x 20 mm
- 1 zamak back plate 45,5 x 28 mm
- 1 steel cam plate ce: 46 mm

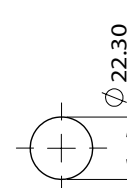
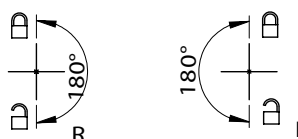
## Specifications:

Extra strong 3mm cam plate  
180 degree turn  
F/Shackle hole Ø8,5 mm  
Pre-installed as right hand. Can  
easily be changed to left hand  
by turning locating blocks

Item No.: # 14.04.575



Core turn direction



Placing the locating blocks according to the L/R markings  
can achieve the setting of L and R rotation directions.

# PADLOCKABLE CAM LOCK "ROTO"

**Application:**

For metal and wooden cabinets & lockers.  
To be used with a padlock.  
Hex nut installation.

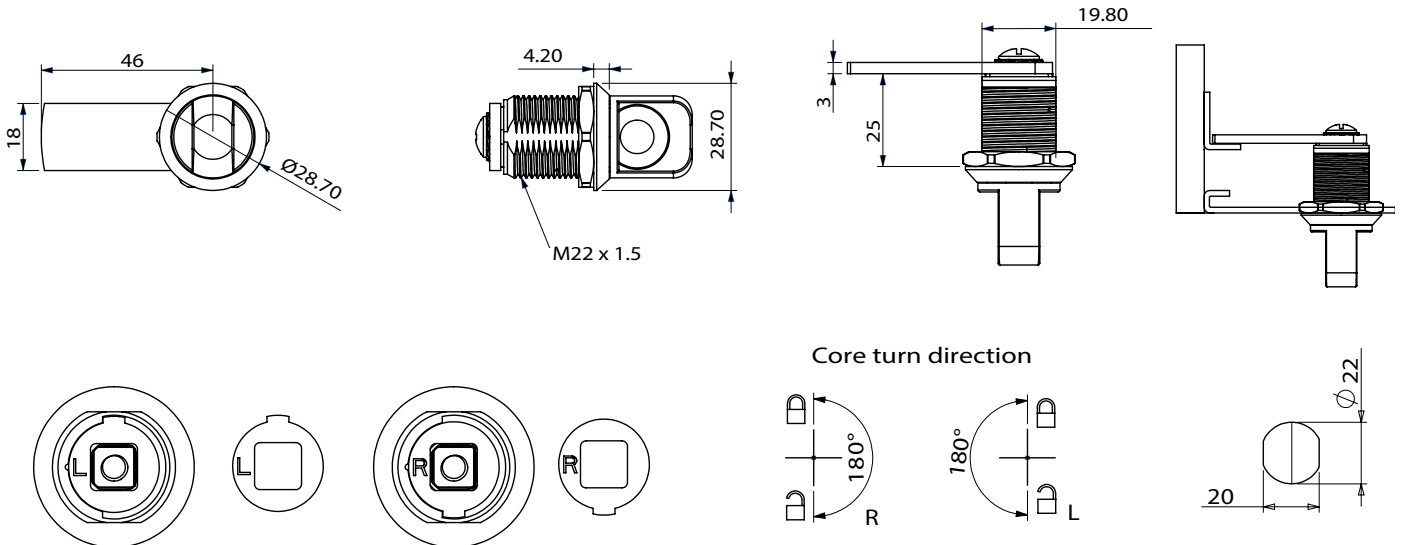
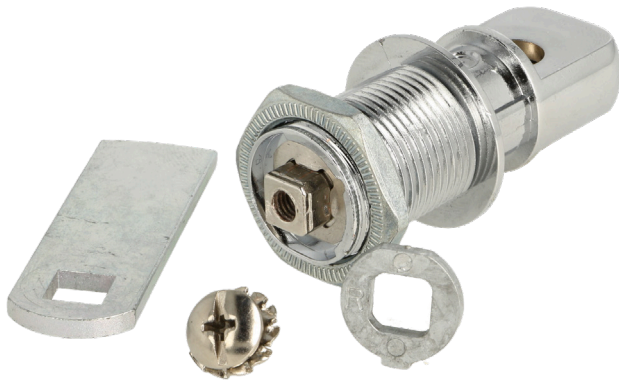
**Accessories for one set:**

- 1 zamak lock cylinder Ø22 x 25 mm
- 1 steel cam plate ce: 46 mm
- 1 zamak hex nut

**Specifications:**

Extra strong 3mm cam plate  
180 degree turn  
F/Shackle hole Ø8,5 mm  
Pre-installed as right hand. Can easily be changed to left hand by turning locating blocks

**Item No.:** # 14.04.578



Placing the locating blocks according to the L/R markings can achieve the setting of L and R rotation directions.